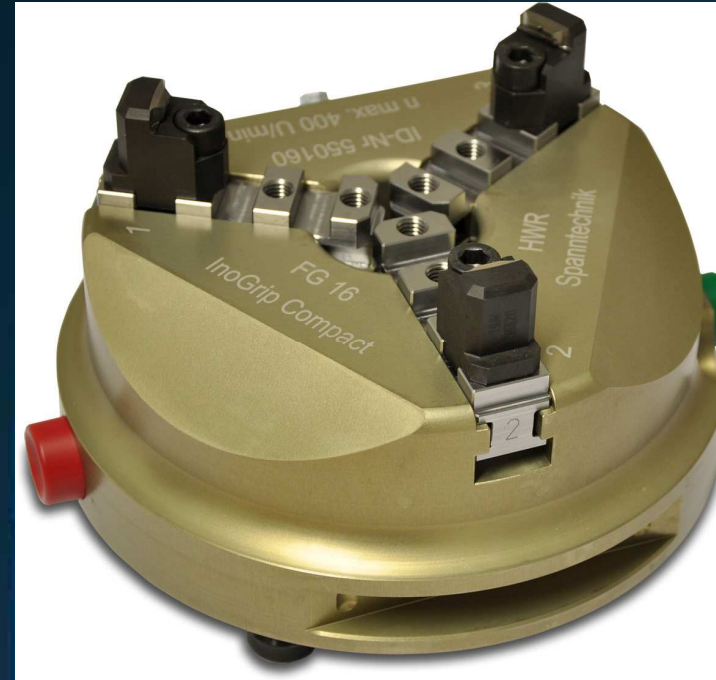




www.langworkholding.com



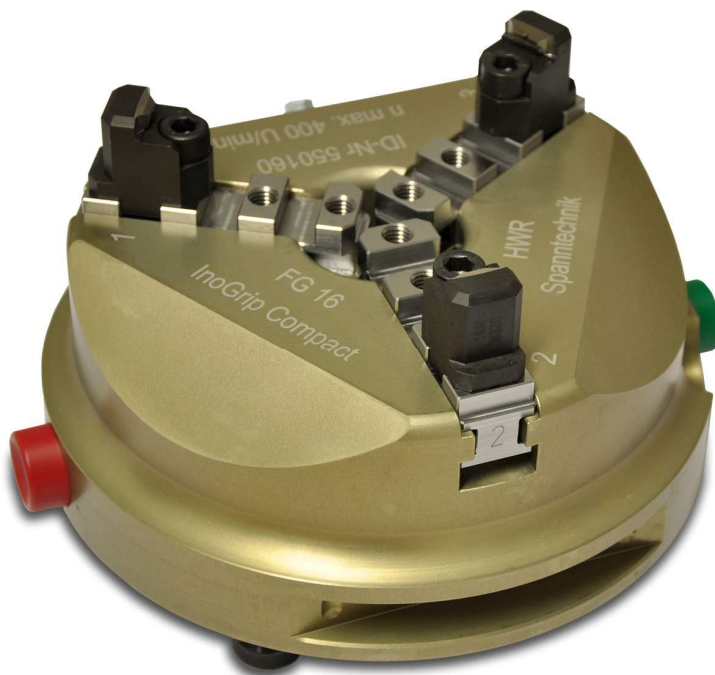
WORKHOLDING • AUTOMATION • 5-FACE-MACHINING • 2011



WORKHOLDING
AUTOMATION
5-FACE-MACHINING

2011

InoGrip-Compact



- **Wear-resistant coated aluminium base body**
- **Hand-operated scroll chuck**
- **Integrated adaptation for LANG automation systems**
- **Equipped with clamping studs for LANG Quick-Point 96**
- **Clamping range of 10 – 160 mm**
- **InoGrip jaws, soft block jaws, hardened turn and drill jaws available**
- **Optimized geometry for ideal accessibility**

Imprint

LANG Programm 2011

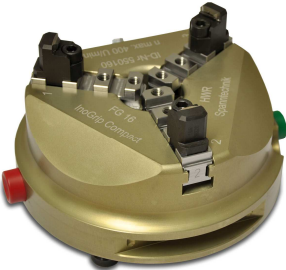
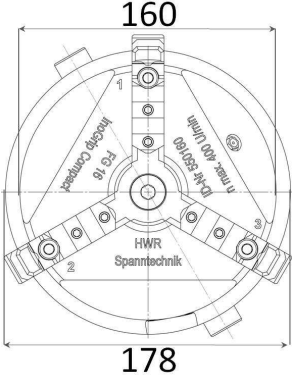
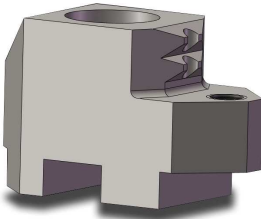
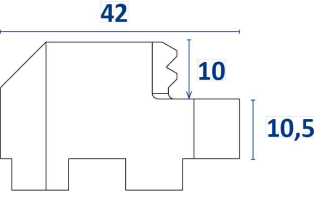
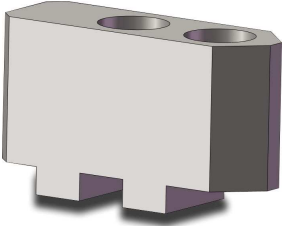
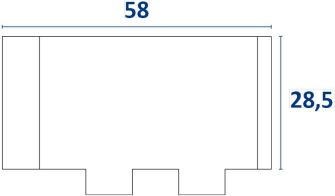
www.langworkholding.com

info@machinetoolsolutions.ca

Tel: 905-790-8640

Toll free: 1-877-687-7253

Fax: 905-790-3740

Item #	Picture	Dimensions	Included in delivery/ clamping range	
61160	<p><u>InoGrip Compact FG16</u></p> 		<p><u>Included in delivery:</u> chuck, base jaws, handling key (without add-on jaws)</p>	
61161	<p><u>Hardened jaw FU16</u></p> 		<p>Clamping range: Ø 30 - Ø 160 mm</p>	(Set of 3)
61162	<p><u>Soft jaw FI16</u></p> 		<p>Clamping range: Ø 5 - Ø 160 mm</p>	(Set of 3)